

## ADULT CARERS

THE AREA  
WE COVER:

Seaton Burn

Wideopen

Killingworth

Forest Hall

Longbenton

Wallsend

Battle Hill

Howdon

Whitley Bay

Monkseaton

Shiremoor

Cullercoats

Tynemouth

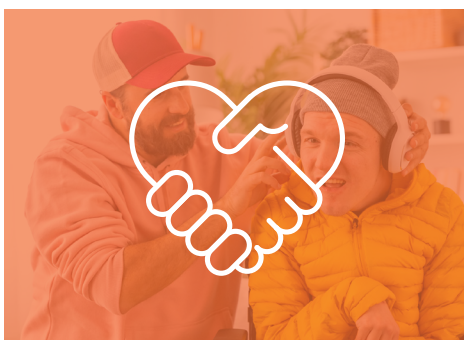
North Shields

WE REACHED  
**6,746**  
ADULT CARERS



**309**  
**ASSESSMENTS**  
were completed  
including first stage  
and statutory

**664 NEW  
REFERRALS  
RECEIVED**



**1025 CARERS**  
contacted the centre via  
the advice line of which  
673 were new carers



**49 SESSIONS**  
delivered to  
**440 CARERS**  
including peer support  
groups, training and  
wellbeing activities



**THE ADULT  
CARERS FORUM**  
met 9 times and has  
6 members



**£57,148 ANNUAL  
BENEFIT GAINS**  
to improve carers'  
financial wellbeing



**£30,776 RAISED**  
in individual grants for  
carers to help those  
struggling financially

## YOUNG AND YOUNG ADULT CARERS

THE AREA  
WE COVER:



WE REACHED

**743**

YOUNG AND YOUNG  
ADULT CARERS



Provided advice  
and guidance to  
**271 YOUNG CARERS  
AND THEIR FAMILIES**

**168 NEW  
REFERRALS  
RECEIVED**

**30 YOUNG  
AND YOUNG  
ADULT CARERS**  
accessed therapeutic  
support



**1-2-1**

Supported  
**181 YOUNG CARERS  
AND THEIR FAMILIES**  
through one to one  
and family support



**18 YOUNG  
ADULT CARERS**  
received transition  
assessments and 56  
received support



**108 BREAKS  
AND ACTIVITIES**  
delivered to  
**78 YOUNG CARERS**



**THE YOUNG  
CARERS FORUM**  
has 13 members  
and met 12 times